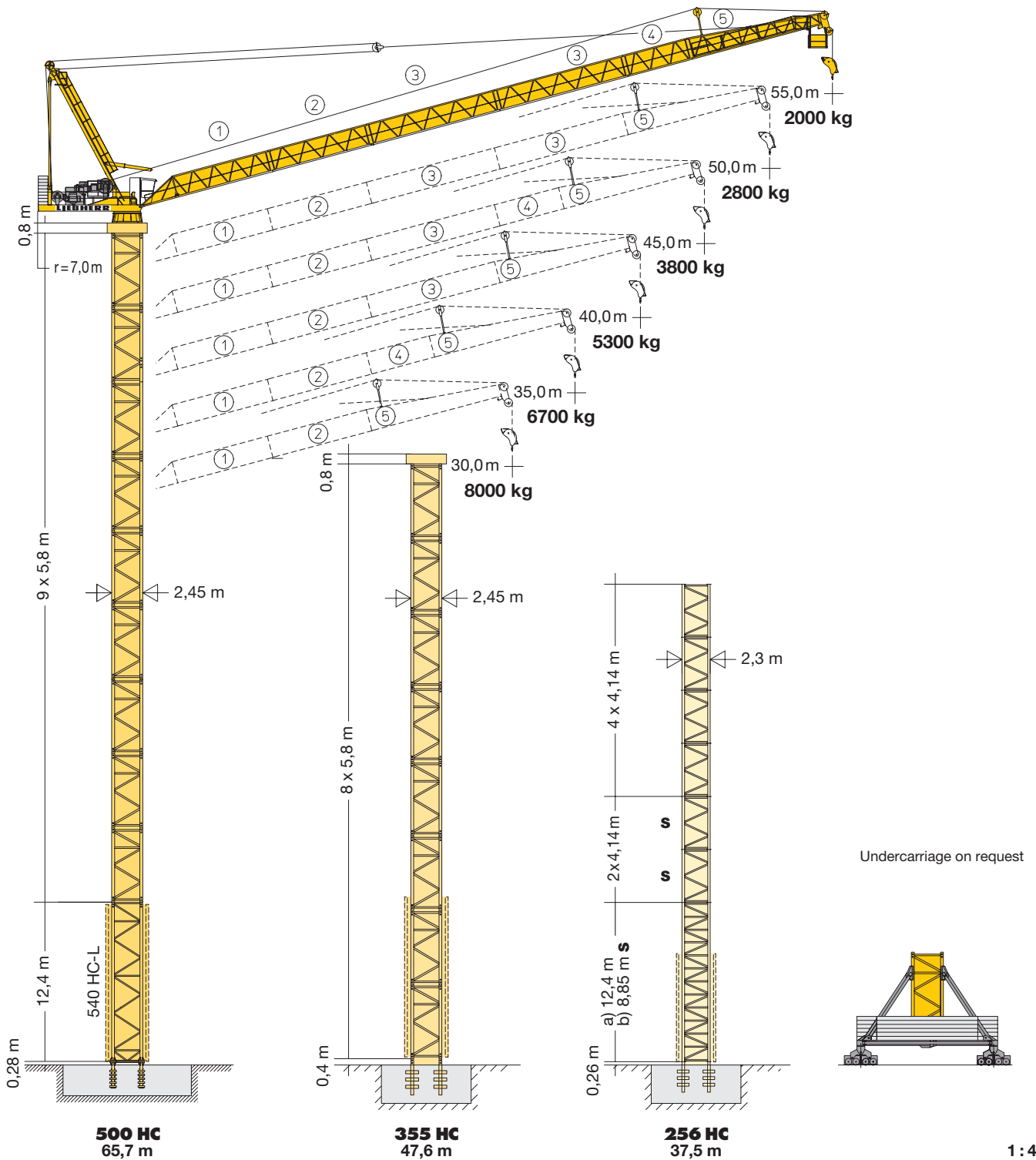


# LIEBHERR

## 160 HC-L 8/16 Litronic®



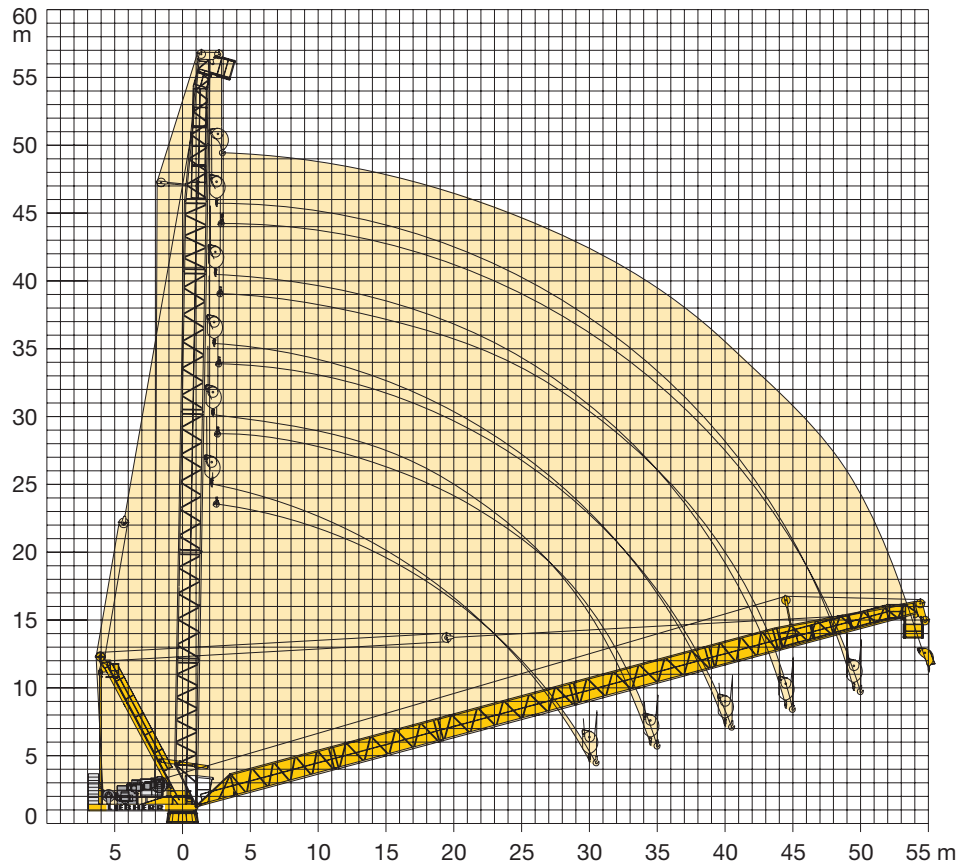
1 : 455



**RRS**  
RESOLUTION  
RIGGING SERVICES

6-8 Resolution Dr (P O Box 1396) Unanderra NSW 2526  
Ph: 02 4271 4343 Fax: 02 4271 4746 Mobile: 0412 591 833  
ABN: 50 095 255 628 ACN: 095 255 628

# Radius and Hoisting Height



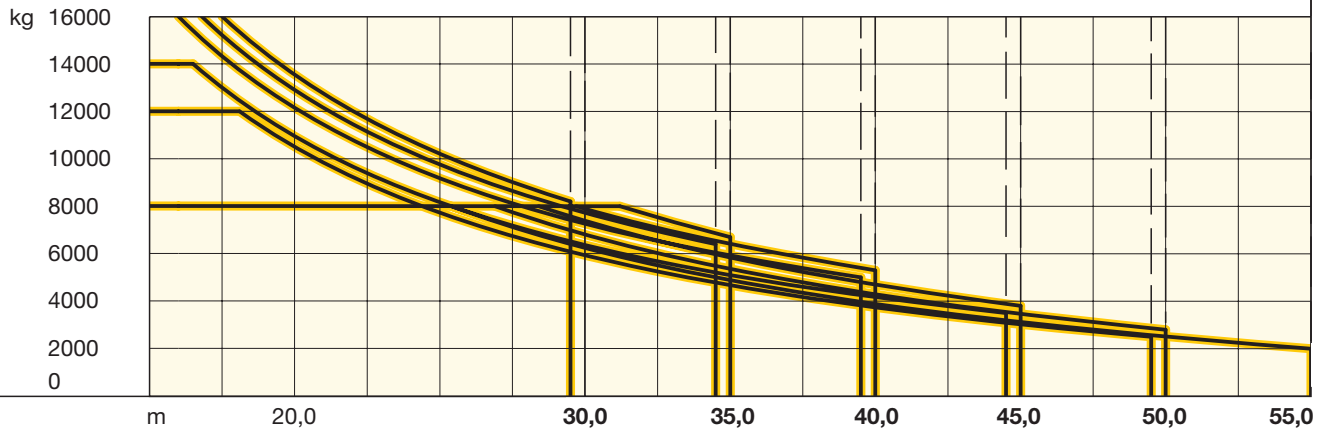
## Tower Heights

	256 HC						355 HC			500 HC			500 HC			
	Jib															
	30,0 m		35,0 m		40,0/45,0 m 50,0/55,0 m		30,0 m	35,0/40,0/ 45,0 m	50,0 m	30,0 m	40,0 m/ 45,0 m	50,0 m	30,0 m	35,0 m/ 40,0 m	45,0 m/ 50,0 m	55,0 m
12	-	-	-	-	-	-	-	-	-	70,0*	-	-	82,3*	-	-	
11	-	-	-	-	-	-	-	-	-	64,2	64,2*	-	76,5	76,5*	-	
10	-	-	-	-	-	-	58,4*	-	-	58,4	58,4	58,4*	70,7	70,7	70,7*	
9	-	-	-	-	-	-	52,6	52,6*	-	52,6	52,6	52,6	64,9	64,9	64,9	
8	42,2*	45,8*	-	-	-	-	46,8	46,8	46,8*	46,8	46,8	46,8	59,1	59,1	59,1	
7	38,1	41,7	38,1*	41,7*	-	-	41,0	41,0	41,0	41,0	41,0	41,0	53,3	53,3	53,3	
6	33,9	37,5	33,9	37,5	33,9*	37,5*	35,2	35,2	35,2	35,2	35,2	35,2	47,5	47,5	47,5	
5	29,8	33,4	29,8	33,4	29,8	33,4	29,4	29,4	29,4	29,4	29,4	29,4	41,7	41,7	41,7	
4	25,7	29,3	25,7	29,3	25,7	29,3	23,6	23,6	23,6	23,6	23,6	23,6	35,9	35,9	35,9	
3	21,5	25,1	21,5	25,1	21,5	25,1	17,8	17,8	17,8	17,8	17,8	17,8	30,1	30,1	30,1	
2	17,4 <b>s</b>	21,0 <b>s</b>	17,4 <b>s</b>	21,0 <b>s</b>	17,4 <b>s</b>	21,0 <b>s</b>	12,0	12,0	12,0	12,0	12,0	12,0	24,3	24,3	24,3	
1	13,2 <b>s</b>	16,8 <b>s</b>	13,2 <b>s</b>	16,8 <b>s</b>	13,2 <b>s</b>	16,8 <b>s</b>	6,2	6,2	6,2	6,2	6,2	6,2	18,5	18,5	18,5	
0	a) 9,1 <b>s</b> b) 12,7	a) 9,1 <b>s</b> b) 12,7	a) 9,1 <b>s</b> b) 12,7	a) 9,1 <b>s</b> b) 12,7	a) 9,1 <b>s</b> b) 12,7	a) 9,1 <b>s</b> b) 12,7	0,4	0,4	0,4	0,4	0,4	0,4	12,7	12,7	12,7	
	m						m			m			m			

Out of operation, jib position 15° – 70°.  
Combinations of tower systems 355 HC and 500 HC on request.

# Radius and Capacity

m	m/kg	m/kg															
		17,5	20,0	22,5	25,0	27,5	30,0	32,5	35,0	37,5	40,0	42,5	45,0	47,5	50,0	52,5	55,0
55,0	3,0-25,4 8000	8000	8000	8000	8000	7120	6240	5510	4880	4350	3880	3480	3120	2800	2510	2250	2000
50,0	3,0-26,9 8000	8000	8000	8000	8000	7750	6810	6020	5360	4790	4290	3850	3470	3120	2800		
	3,0-18,1 12000	12000	10500	8950	7730	6740	5930	5250	4670	4170	3740	3360	3020	2720	49,5 m 2500		
45,0	3,0-28,4 8000	8000	8000	8000	8000	8000	7380	6550	5840	5230	4700	4230	3800				
	3,0-16,5 14000	13010	10950	9390	8170	7180	6360	5680	5100	4600	4170	3780	44,5 m 3500				
40,0	3,0-29,7 8000	8000	8000	8000	8000	8000	7890	7090	6420	5830	5300						
	3,0-16,0 16000	14330	12140	10490	9180	8130	7260	6540	5920	5390	39,5 m 5000						
35,0	3,0-31,2 8000	8000	8000	8000	8000	8000	8000	7530	6700								
	3,0-16,8 16000	15220	12900	11140	9760	8640	7720	6950	34,5 m 6400								
30,0	3,0-30,0 8000	8000	8000	8000	8000	8000	8000	8000									
	3,0-17,5 16000	16000	13550	11680	10210	9020	29,5 m 8200										



Lifting capacities valid up to 100 m hoisting height. Over 100 m hoisting height, the lifting capacity is reduced by the additional rope weight.

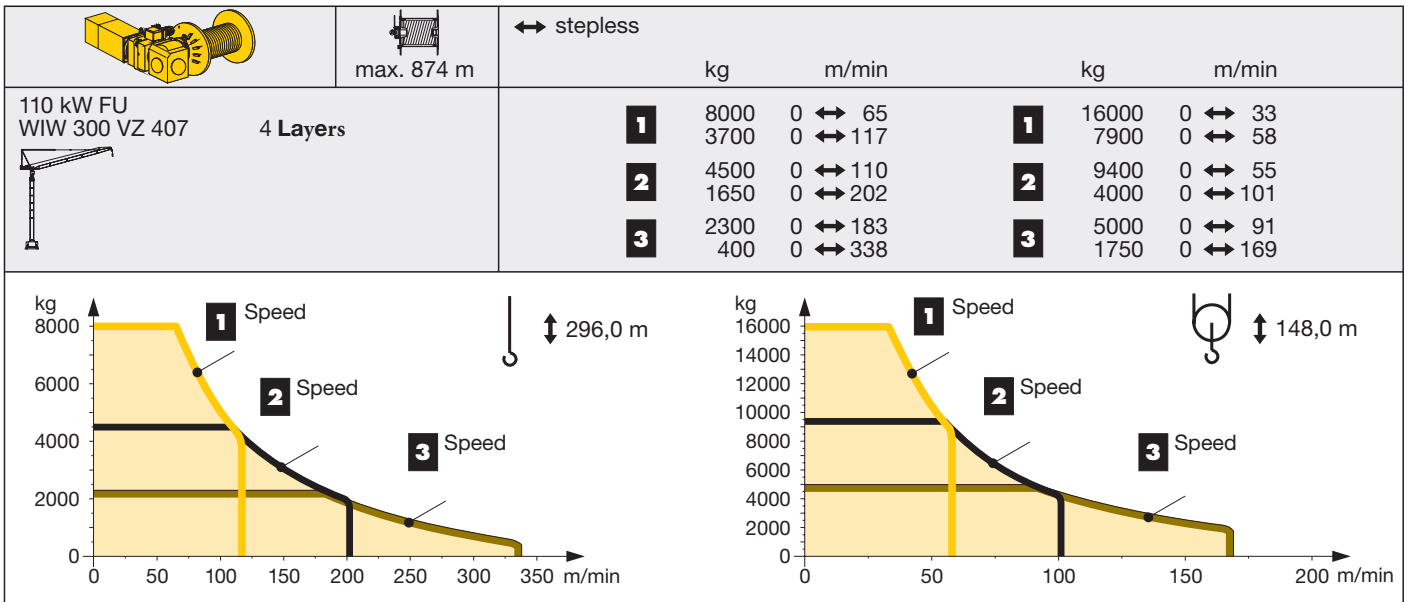
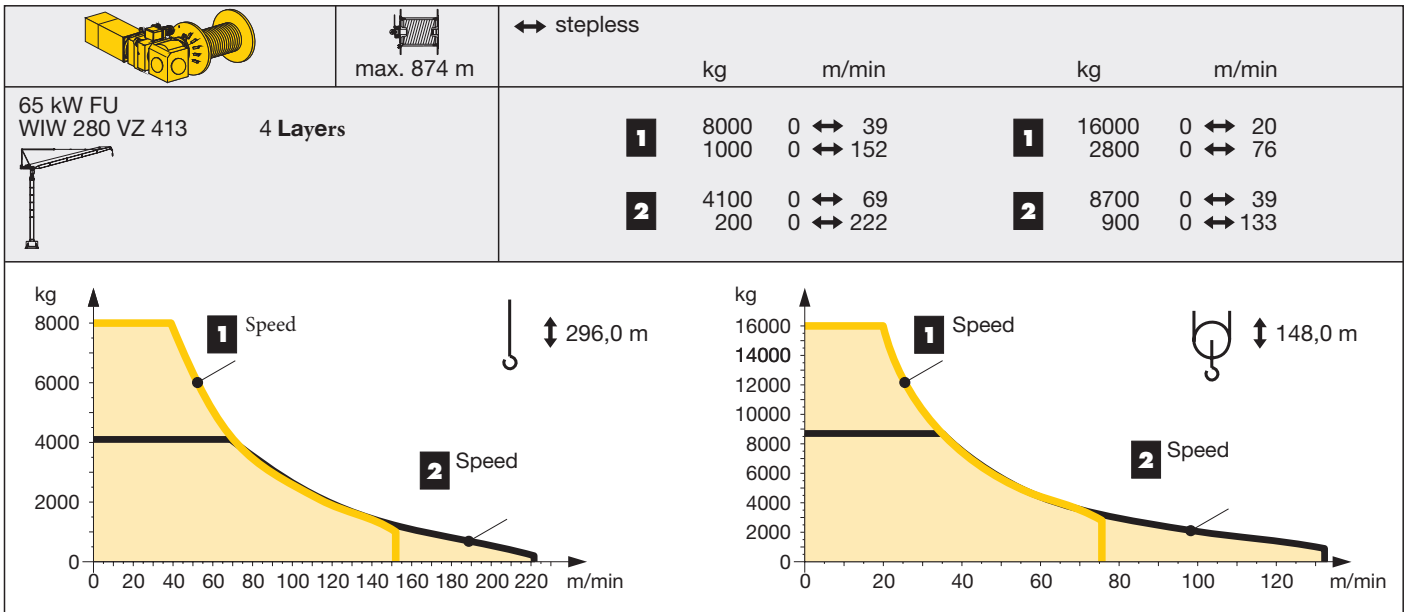
## Driving Units

	U/min 0 ↔ 0,7 sl./min tr./min	2 x 7,5 kW FU
	1,9 min 1,3 min	45 kW FU 65 kW FU
	Undercarriage on request	

	65 kW FU	65 kW FU	110 kW FU
	45 kW FU	65 kW FU	65 kW FU
<b>kVA</b>	121,0	143,0	185,0

kVA can be reduced in case of too little power of the mains, see instruction manual.

# Driving Units - Litronic



## Climbing in the Building Radius and Tower Height

		355 IC							
n	Jib				Jib				
	30,0 m	35,0/40,0 m	45,0/50,0 m	55,0 m	30,0 m	35,0/40,0 m	45,0/50,0 m	55,0 m	
10	h 64,2 <sup>1)</sup>	-	-	-	h 63,8 <sup>1)</sup>	-	-	-	
9	58,4 <sup>1)</sup>	58,4 <sup>1)</sup>	-	-	58,0 <sup>1)</sup>	58,0 <sup>1)</sup>	-	-	
8	52,6 <sup>1)</sup>	52,6 <sup>1)</sup>	52,6 <sup>1)</sup>	-	52,2 <sup>1)</sup>	52,2 <sup>1)</sup>	52,2 <sup>1)</sup>	-	
7	46,8 <sup>1)</sup>	46,8 <sup>1)</sup>	46,8 <sup>1)</sup>	46,8 <sup>1)</sup>	46,4 <sup>1)</sup>	46,4 <sup>1)</sup>	46,4 <sup>1)</sup>	46,4 <sup>1)</sup>	

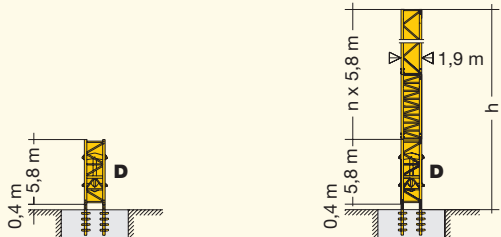


Diagram showing tower height h, jib length n x 5,8 m, and tower diameter D. Tower base width is 0,4 m.

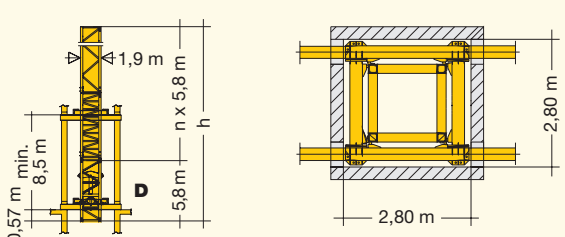


Diagram showing tower height h, jib length n x 5,8 m, and tower diameter D. Tower base width is 0,57 m min. Tower diameter is 2,80 m.

		<b>256 IC</b>					
n	Jib			Jib			
	30,0 m	35,0/40,0 m 45,0 m	50,0/55,0 m	30,0 m	35,0/40,0 m 45,0 m	50,0/55,0 m	
8	h	52,6 <sup>1)</sup>	—	—	52,2 <sup>1)</sup>	—	—
7		46,8 <sup>1)</sup>	46,8 <sup>1)</sup>	—	46,4 <sup>1)</sup>	—	—
6		41,0 <sup>1)</sup>	41,0 <sup>1)</sup>	41,0 <sup>1)</sup>	40,6 <sup>1)</sup>	40,6 <sup>1)</sup>	40,6 <sup>1)</sup>
5		35,2 <sup>1)</sup>	35,2 <sup>1)</sup>	35,2 <sup>1)</sup>	34,8 <sup>1)</sup>	34,8 <sup>1)</sup>	34,8 <sup>1)</sup>

		<b>256 HC</b>					
n	Jib			Jib			
	30,0/35,0 m	40,0/45,0 m 50,0 m	55,0 m	30,0/35,0 m	40,0/45,0 m	50,0 m	55,0 m
8	h	38,7 <sup>1)</sup>	—	—	38,5 <sup>1)</sup>	—	—
7		34,6 <sup>1)</sup>	34,6 <sup>1)</sup>	—	34,4 <sup>1)</sup>	—	—
6		30,5 <sup>1)</sup>	30,5 <sup>1)</sup>	30,5 <sup>1)</sup>	30,2 <sup>1)</sup>	34,4 <sup>2)</sup>	30,24 <sup>1)</sup>

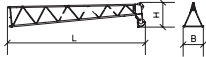
<sup>1)</sup> Out of operation, jib position 15° – 70°.

<sup>2)</sup> Out of operation, jib position 15° – 60°.




## Components List

Erection weights: see instruction manual.



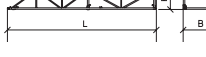

Upper part of crane				L (m)	B (m)	H (m)	kg*	
Item	Qty.	Slewing platform		256 HC	2,29	2,74	2,37	7250
				256 IC	3,05	2,55	2,31	8250
2	1	Gear platform			6,14	2,31	2,51	11100
3	1	Cabin with platform			4,34	1,83	2,55	1550
4	1	Jib gantry			11,18	1,92	1,19	3750
5	1	Jib heel section			10,89	1,73	1,76	1700
6	1	8,0 m / Intermediate jib section			8,17	1,73	1,71	1000
7	1	10,35 m / Intermediate jib section			10,52	1,73	1,71	1200
8	1	5,18 m / Intermediate jib section			5,35	1,73	1,71	550

Item	Qty.			L (m)	B (m)	H (m)	kg*
9	1	10,85 m / Jib head section		11,45	1,67	2,05	1700

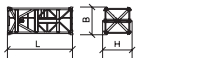
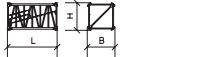
## Tower

10	1	Base tower section		256 HC 8,85 256 HC 12,42 540 HC-L 12,42	2,30 2,30 2,68	2,30 2,30 2,68	6000 8000 14461
11	1	4,14 m / Tower section		256 HC 4,14 256 HC S 4,14	2,30 2,30	2,30 2,30	2300 2850
12	1	5,8 m / Tower section		256 IC 6,28 355 HC 6,28 355 IC 6,28 500 HC 6,28	1,90 2,45 1,90 2,45	1,90 2,45 1,90 2,45	4600 5000 5700 6450

## Climbing on the building

13	1	Guide section		256 HC 8,39 355 IC 12,30	2,68 2,30	2,58 (3,04) 2,55	4800 6900
14	1	Guide section-face / Face		256 HC 4,32	2,80	0,47	850
15	1	Guide section with platform		500 HC 12,36 500 HC 12,36	2,77 2,77	1,60 1,60	3100 3500 950
16	1	Hydraulic unit and climbing cross members		256 HC 2,20 256 IC 2,20 500 HC 2,60	1,20 1,20 1,50	0,50 0,50 0,60	1200 1500 1900

## Climbing in the building

17	1	Climbing tower section		256 HC S 5,40 355 HC 6,28 355 IC 6,28	2,30 2,45 1,90	2,45 2,81 2,81	7900 10200 9300
18	1	Hydraulic unit		256 IC 2,50 355 HC 2,55 355 IC 2,50	0,80 0,80 0,80	0,60 0,60 0,60	1200 1200 1500
19	1	Anchoring tower section		256 HC S 4,14 256 IC 6,28 355 IC 6,28	2,30 1,90 1,90	2,30 1,90 1,90	3800 5400 6600
20	3	Guide frame		256 HC 3,30 355 HC 3,80 355 IC 3,50	0,80 1,30 1,10	0,90 1,40 0,90	2700 5000 2500

## Ballast

21	1	Concrete ballast		4,50	0,94	0,64	4600
----	---	------------------	---	------	------	------	------

## Small Parts

22	1	Ropes, load hook, platforms, small parts					5700
----	---	--	--	--	--	--	------

\* Single weights.